



SFV 600 Safety Valve

Description

The SFV600 is a full lift, semi nozzle, spring loaded safety valve.

Suitable for Steam, air and water; and there are capacity tables.

this valves have open bonnet, lifting lever and metal on metal seal.

SFV600 is according to EN ISO 4126.

Applications

This safety valve is suitable for:

steam or hot water boilers, vessels and general relief applications.

ability to built up back pressure max. 10 % from set pressure (higher on request).



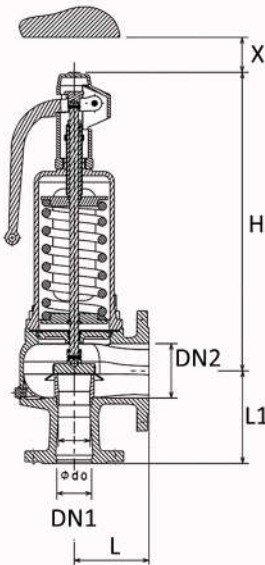
Sizes and pipe connections

A0 is Area in mm²

DN1 ,DN2	25/40	40/65	50/80	65/100	80/125
d 0	22.5	36	45	58.5	72
A 0	398	1018	1590	2688	4072
l	100	115	120	140	160
l1	105	140	150	170	195
H	280	390	435	545	610
X	150	250	300	350	400
Weight	10	20	28	40	53

Dimensions are approximate and in mm.

Flange standards : BS 4504 PN16 , PN40
BS 1560 Class 150 , Class 300



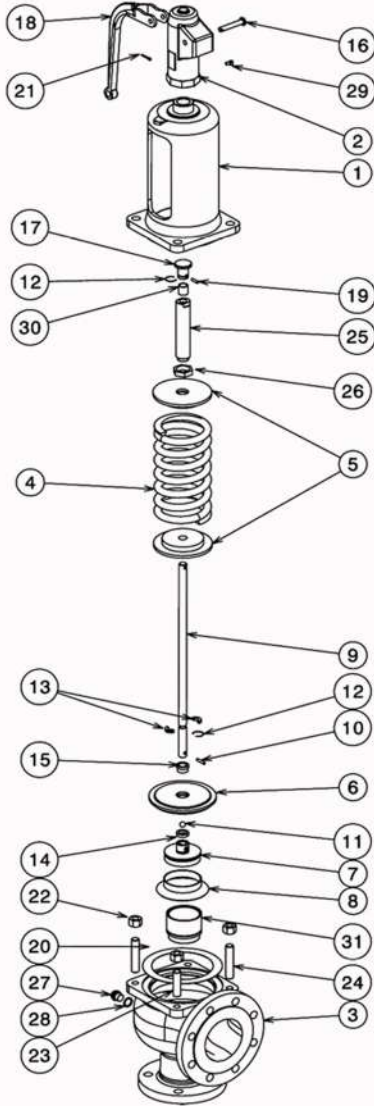
Limiting Conditions

Intermediate values from max. permissible operational pressure can be determined by linear interpolation of the given temperature/ pressure chart.

Pressure in (bar)	Temperature	-10°C to 120°C	150°C	200°C	250°C	300°C	350°C	400°C	450°C		
	material	Acc. to DIN EN 1092-2									
EN-JL1040	16	16	14.4	12.8	11.2	9.6	-	-	-		
EN-JS1049	40	40	38.8	36.8	34.8	32	28	-	-		
material	Acc. to manufactures standards										
1.0619+N	40	40	38.1	35	32	28	25.7	23.8	13.1		
Temperature		-29°C to 38°C	93°C	149°C	204°C	260°C	315°C	343°C	371°C	399°C	427°C
material	Acc. to ANSI										
SA 216 WCB	ANSI 150	19.6	17.9	15.8	13.8	11.7	9.6	8.6	7.6	6.6	5.5
SA 216 WCB	ANSI 300	51.1	46.6	45.2	43.8	41.4	39.3	37.9	36.6	34.8	28.3

SFV600 Safety Valve

Material



NUM.	Part name	Material	
1	Bonnet	Cast iron (GGG40)	
2	Cap	Cast iron (GGG40)	
3	Body	Size 3"	
		Other size	Cast iron (GG25)
		Cast steel (A216-WCB)	
4	Spring	Alloy steel	
5	Plug	Stainless steel	
6	Spindle guide	Cast iron (GG25)	
7	Disk	Stainless steel	
8	Cone	Stainless steel	
9	Spindle	Stainless steel	
10	Pin	Steel	
11	Ball	Stainless steel	
12	Spindle key	Stainless steel	
13	Bushing	Stainless steel	
14	Washer	Stainless steel	
15	Bushing	Stainless steel	
16	Pin	Alloy steel	
17	Pin	Stainless steel	
18	Lever	Cast iron (GGG40)	
19	Pin	Steel	
20	Gasket	Teflon packing	
21	Cotter pin	Steel	
22	Hexagon nut	Steel	
23	Stud	Steel	
24	Stud	Steel	
25	Adjusting screw	Stainless steel	
26	Lock nut	Stainless steel	
27	Screw	Stainless steel	
28	Washer	Copper	
29	Screw	Steel	
30	Bushing	PTFE	
31	Seal	Stainless steel	



02166479486

0912 8448763 تماس 24 ساعته حتى تعطيلات

0919 0345384



SFV600 Safety Valve

Capacities for saturated steam & air

Capacity for saturated steam and air in 10% over pressure

Capacity saturated steam / air incl.10% overpressure											
Set pressure	Bar g	saturated steam (Kg/h)				Air 0°C and 1.013 bar a(Nm ³ /h)					
		DN25		DN40		DN50		DN65		DN80	
0.2	126	148	324	380	506	594	855	1003	1295	1520	
0.4	185	223	473	570	739	891	1250	1505	1890	2280	
0.5	207	252	529	646	827	1009	1400	1705	2120	2585	
0.6	230	284	590	728	923	1135	1560	1920	2360	2910	
0.8	272	341	698	873	1090	1365	1840	2305	2790	3490	
1	317	398	811	1019	1270	1590	2140	2690	3245	4075	
1.5	425	538	1090	1378	1700	2150	2875	3640	4355	5510	
2	477	607	1220	1550	1900	2425	3220	4100	4880	6210	
2.5	572	731	1460	1870	2285	2925	3865	4945	5855	7490	
3	662	850	1695	2175	2645	3400	4475	5750	6775	8700	
4	837	1080	2140	2770	3350	4330	5650	7310	8570	11080	
5	1000	1300	2565	3330	4000	5210	6770	8800	10260	13340	
6	1165	1520	2990	3900	4665	6090	7890	10300	11950	15600	
7	1330	1745	3400	4465	5320	6970	9000	11790	13600	17860	
8	1495	1965	3820	5030	5980	7860	10100	13280	15300	20100	
9	1660	2185	4245	5590	6630	8740	11200	14770	16950	22370	
10	1820	2400	4665	6150	7290	9610	12300	16250	18650	24600	
11	1985	2625	5080	6720	7940	10500	13400	17750	20300	26900	
12	2150	2845	5500	7290	8590	11380	14500	19240	22000	29500	
13	2310	3070	5920	7850	9250	12270	15600	20730	23650	31400	
14	2475	3290	6340	8400	9900	13150	16700	22200	25350	33650	
15	2640	3500	6760	8980	10550	14030	17800	23700	27000	35900	
16	2800	3725	7170	9540	11200	14900	18950	25200	28700	38200	
17	2965	3950	7590	10100	11850	15800	20050	26700	30350	40400	
18	3130	4170	8010	10670	12500	16650	21150	28100	32050	42700	
19	3295	4390	8430	11240	13150	17550	22250	29600	33700	44900	
20	3460	4610	8850	11800	13800	18400	23350	31150	35400	47200	
21	3620	4830	9250	12370	14500	19300	24500	32650	37100	49400	
22	3790	5050	9700	12930	15150	20200	25600	34150	38800	51700	
24	4120	5490	10500	14060	16450	21970	27850	37100	42100	56200	
25	4280	5710	10950	14620	17100	22850	28950	38600	43800	58500	
26	4450	5930	11350	15190	17800	23730	30050	40100			
28	4780	6370	12250	16320	19100	25500	32300	43100			
30	5120	6810	13100	17450	20450	27250					
32	5450	7250	13950	18570	21800	29000					
34		7700		19700		30800					
40		9030		23810		36100					

ma x.set. pres. ures ta in less ste el versi on

تماس 24 ساعته حتى تعطيلات

09190345384 09128448763 02166479486

www.Controltak.com

Controltak@gmail.com

Controltak
تلگرام
Control-Tak
اینستاگرام



02166479486

0912 8448763

تماس 24 ساعته حتى تعطيلات

0919 0345384



SFV600 Safety Valve

Installation Certified coefficient of discharge kdr

Certified coefficient of discharge kdr:					
Kdr	DN25	DN40	DN50	DN65	DN80
D/G	0.74	0.74	0.74	0.74	0.74
F	0.54	0.54	0.54	0.48	0.48

Installation

- the centre line of the spring housing should be vertically above the valve.
- the inlet connection to the valve should be as short as possible and no smaller in area than the flow diameter of the valve.
- the outlet pipe work should also be short, of a size no smaller in area than the valve outlet bore size.
- for steam or air service, discharge lines should rise vertically and should be fitted with drain.
- pipe work should be supported.

How to order

size : DN 20,25,40,50,65,80

working pressure & temperature (bar g),(C)

set pressure:---(bar g)

condition of gas or liquid medium

تماس 24 ساعته حتى تعطيلات

09190345384 09128448763 02166479486

www.Controltak.com

Controltak@gmail.com

تلگرام Controltak
اینستاگرام Control-Tak